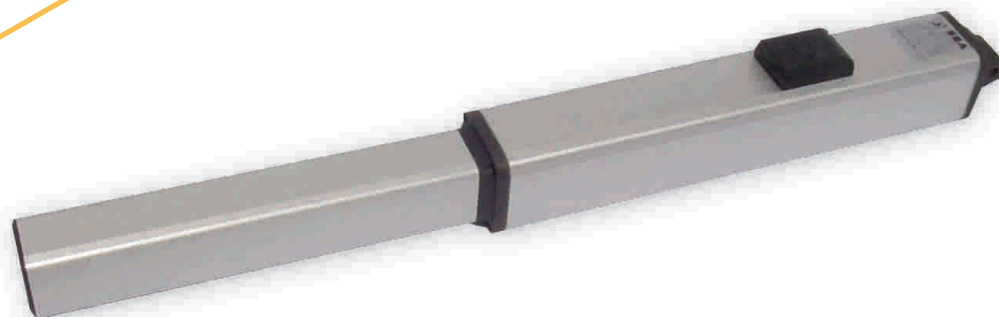


Compliant to UL 325



FULL TANK

HYDRAULIC SWING OPERATOR
FOR COMMERCIAL USE

The Silence and Reliability of hydraulic operator

- Commercial Hydraulic swing operator for leaves up to 23 feet of length
- SEA Total Quality: All parts are manufactured and tested IN-HOUSE.
- The operating by hydraulic fluid grants high and long terms performances.
- 5 Versions available: NORMAL, STANDARD, FAST, LARGE and EXTENDED.
- By-pass valve as an Anti-Crush safety system .
- Electronic slow-down in opening and closing.
- Electronic Reversing Sensor available on request (SAFETY GATE).
- Hydraulic Adjustable slow down available on request.
- Mechanical Positive Stop available on request.
- Manual release with Key in case of power failure.



Manual release



Ball bearing bracket



Positive stop

Sea USA Inc.
8332 NW 30TH TERRACE
MIAMI, FL 33122
Toll free: 1.800.689.4716
Ph: 305.594.1151
fax: 305.594.7325

sales@sea-usa.com

<http://www.sea-usa.com>

FULL TANK

Specifications	Full TankNormal/Standard/Fast	Full TankLarge/Extended
Supply Voltage	115Vac+5% 60Hz	115Vac+5% 60Hz
Motor Current	2 A	2 A
Duty cycles	100%	100%
Operating temperature	-43°F + 131°F	-43°F + 131°F
Operator Weight	20 Pounds	20 Pounds
Max leaf weight	2200 Pounds	2200 Pounds
Max leaf length	23 Feet	23 Feet
Opening time	11 - 20 sec.	11 - 20 sec.
Protection class	IP67	IP67
Opening angle	125° Max	125° Max
Stroke	10,62 inch.	15,35 inch.

CONTROL BOARDS

Specifications

GATE 2 (for 2 leaves)

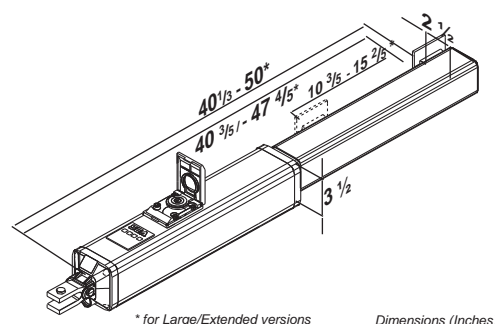
- Management of two 230 Vac motors with or without limit switch
- Automatic logic(4 modalities), semiautomatic, step by step, dead man logics
- Slow down in opening and closing
- Motor couple regulation
- Self-learning operating time
- Self-test on photocells
- Self-diagnosis
- Encoder management (also Safety Gate for swing gates)
- Electric lock management
- Diagnostic Leds on all outputs/inputs
- Extractable connectors
- Integrated receiver compatible with radio transmitters SMART, HEAD ROLL and HEAD ECOPY series (800 users)
- Optional display
 - Alphanumeric LCD display 2 lines for 16 letters
 - It is possible to set and to modify time
 - Diagnostic functions
 - Recording of failures and last 10 events
 - Functioning logics customizing

GATE 2 Pre-wired (on request)

- Management of two 230 Vac motors with or without limit switch
- Automatic logic(4 modalities), semiautomatic, step by step, dead man logics
- Slow down in opening and closing
- Motor couple regulation
- Self-learning operating time
- Self-test on photocells
- Self-diagnosis
- Encoder management (also Safety Gate for swing gates)
- ON/OFF switch and 115 V receptacle
- Two loop detectors wired plus a third loop detector wired as a "shadow" (intermediate).
- Open/Hold-Open contacts provide the normally open input for phone, fireboxes or any other Open/Hold-Open devices.
- A plug outlet for any 115 VAC accessories and tools (5amp max).
- An ON/OFF switch controlling power to control panel, accessories and plug outlet.
- Wired for dual photocells safety - open and closed.
- Available in large box 16" x 14" x 6"
- std box 14" x 12" x 6"
- Electric lock management
- Diagnostic Leds on all outputs/inputs
- Extractable connectors
- Integrated receiver compatible with radio transmitters SMART, HEAD ROLL and HEAD ECOPY series (800 users)
- Optional display
 - Alphanumeric LCD display 2 lines for 16 letters
 - It is possible to set and to modify time
 - Diagnostic functions
 - Recording of failures and last 10 events
 - Functioning logics customizing

Dimensions

FULL TANK



ACCESSORIES:

Loop Detectors / Photocells / Key Pads / Card Readers / Transmitters & Receivers / Telephone Entry Systems / Intercom Systems

Thermo

Spike suppressor

Battery back up for all AC operators



SAFETY GATE

SEA patented reversing system for swing gates.